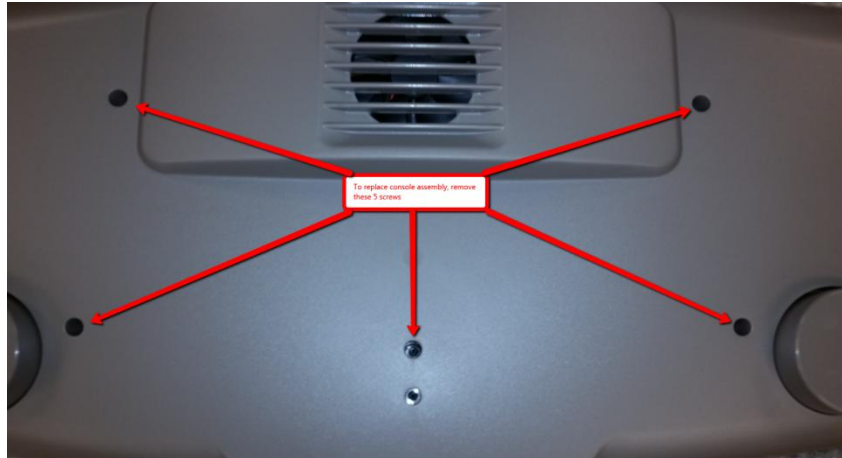
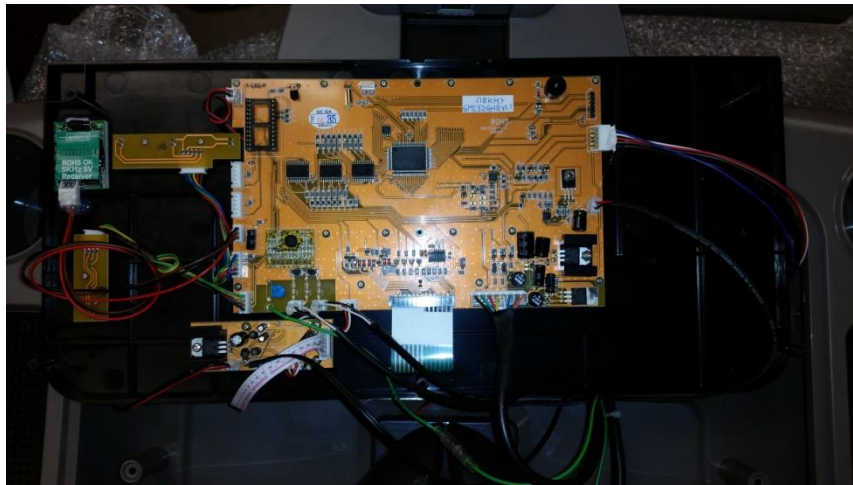


Daytona Console Replacement

To replace the console assembly, start by removing the 5 screws on the back housing that hold the console assembly in place:

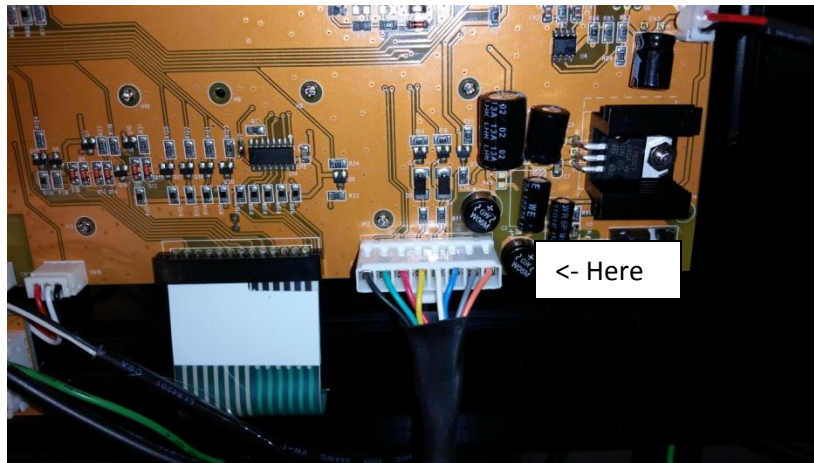


Now the console assembly can be lifted out of the housing, here is what the back of the console will look like:

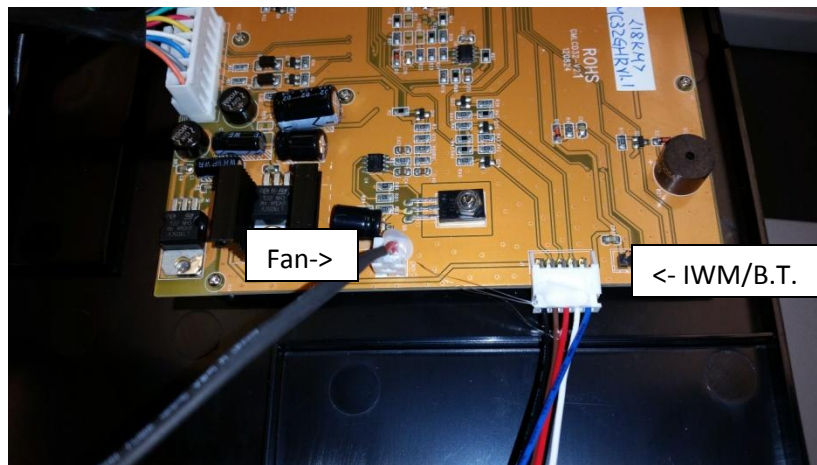


You will need to disconnect the following cables & reconnect them to the new console assembly (NOTE some connectors will have glue on them – just peel the glue off with your fingers):

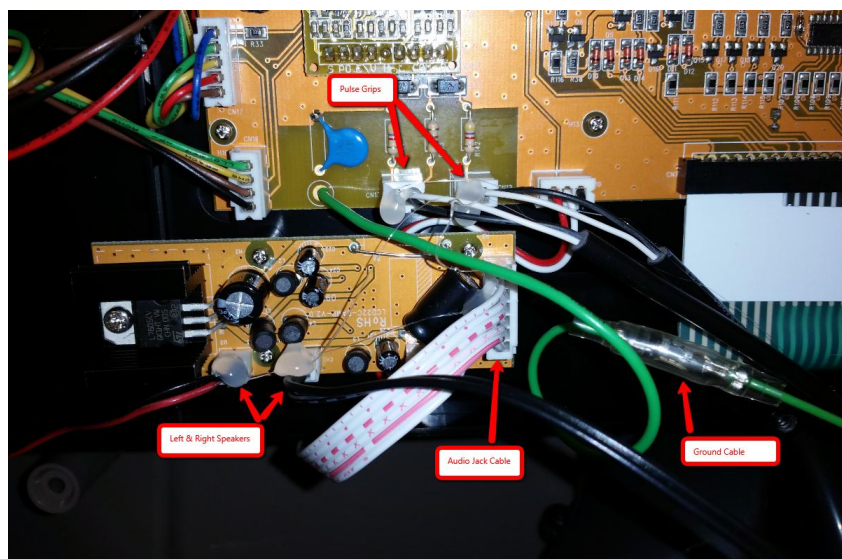
Main 8-pin harness:



Fan & Bluetooth/IWM Receiver cable:



Speakers, Audio Jack, Pulse Grips & Ground cables:



Once these cables have been disconnected from old console & connected to the new console, place console back into housing and secure using the 5 screws removed from step 1.