

Spirit XE500

Spirit XE500, XE400, XE200, XE300, XE100 User Manual

Download

5 (1)

Model Search... User Manual 38 PGS 6.5 Mb 0

- C
- CT 800
- X
- XE500
- Z
- Z300



SERVICE MANUAL

XE100

XE200

XE300

XE400

XE500

Table of Contents

Troubleshooting Guide	
Electronic System.....	3
Mechanical System.....	4
Repair Procedures	
Procedure 1 (Test adapter for voltage).....	5

Spirit XE500

User Manual
38 PGS 6.5 Mb 0

- C
- CT 800
- X
- XE500
- Z
- Z300

Procedure 3 (Assembling mode).....	6.8
Procedure 4 (XH400/500 of sensor and magnet).....	8.6
Procedure 5 (XH400/500 of wiring cable).....	9.7

Warranty

Contacting Customer Service.....	10
XE Warranty.....	11
Warranty Policy.....	12
Parts Order Form.....	13
Warranty Labor Credit Form.....	14

XE100

Exploded View.....	15
Parts List.....	16-18

XE200

Exploded View.....	19
Parts List.....	20-22

XE300

Exploded View.....	23
Parts List.....	24-27

XE400

Exploded View.....	28
Parts List.....	29-32

XE500

Exploded View.....	33
Parts List.....	34-38

Troubleshooting Guide

ELECTRONIC SYSTEM

No power to the console

1. Unit must be plugged into an outlet with power
2. Test adapter for voltage with a volt meter. (Procedure 1)
3. Disconnect console, test harness for voltage. (Procedure 2)

No resistance change

1. When the UP or DOWN buttons are pressed, listen for the sound of the gear motor running.
 2. If you cannot hear the motor running, remove the console and set the volt meter to the ohms setting.
 - Measure between the red and the yellow wires; it should be around 5K ohms +/- (500 ohms).
 - Measure between the red and orange wires and then between the yellow and orange wires. These two measurements should add up to the measurement between the red and yellow.
 - If these measurements are correct, then the potentiometer on the gear motor is good.
 - Measure between the black and brown wires. The meter should read close to a short, about 1-5 ohms.
- If all of these readings are correct, the motor and harness are good and the console needs to be replaced.
If any of the readings are not correct, the problem is either the harness or the gear motor. In this case, you need to take the

Spirit	XE500
	User Manual 38 PGS 6.5 Mb 0
C	
CT 800	
X	
XE500	
Z	
Z300	

controlled directly by the motor running, make sure the motor cable is properly connected to both the gear motor and the brake, and the cable is properly adjusted. (Procedure 5)

No speed, distance, or RPM reading	1. Check for proper alignment of speed sensor. (Procedure 4) 2. Check flywheel for magnet. (Procedure 4)
Incline does not work	1. Varyify that the incline motor wires are plugged in correctly where the rail assy. connects to the main body of the unit. (should be black to black, red to red, white to white, and the 3-wire harness

Troubleshooting Guide

MECHANICAL SYSTEM

Resistance too high	1. See Procedure 5 in repair procedures section.
---------------------	--

Thumping noise	1. Clean and lube wheels and rails. 2. If there is still a thump, check for loose bolts. 3. If there is still a thump, order new pedal arm bushing housings with IGOS plastic bushing.
----------------	--

Squeaking noise in the pedal (XE100 & XE200)	1. Order and install a new connecting arms.
--	---

Adjustable pedal not staying in the desired position (XE300)	1. Order and install new threaded bushing and crank pin.
--	--

Slide wheels jumping off of the track	1. Clean wheels and tracks with rubbing alcohol. All of the sticky and/or dirty lube must be removed from both the wheels and the tracks. 2. If the aluminum track has been damaged, order a new aluminum track.
---------------------------------------	---

Spirit

XE500

User Manual
38 PGS 6.5 Mb 0

C

CT 800

X

XE500

Z

Z300

1

PROCEDURE 1: Test adapter for voltage

- 1.1 Plug adapter into a working outlet.
- 1.2 Turn on meter to test for DC voltage.
- 1.3 Put one lead into the end of the plug and the other lead to the metal on the outside.

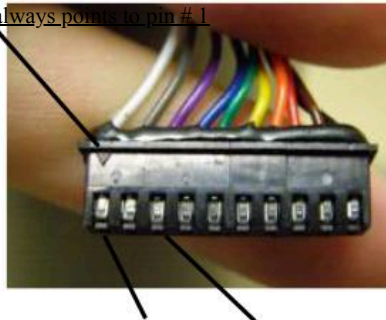


1.4 The adapter will be labeled 9VDC or 12VDC. When testing, the reading should be a few volts higher than the label says. If there is less voltage than what the label says, you need to replace the adapter.

PROCEDURE 2: Test harness for power supply voltage

- 2.1 After you have tested the adapter for voltage, plug in the machine and take the console off of the unit.
- 2.2 Turn on the meter to test for DC voltage.
- 2.3 Put one lead on the 1st wire and the other lead on the 3rd wire.

Triangle always points to pin # 1



Put leads from meter HERE and HERE

2.4 You should have basically the same voltage here as you had when you tested the adapter. If the reading is vastly different, the harness needs to be replaced.

5

Repair Procedures

PROCEDURE 3: Test gear motor

- 3.1 If unit is an XE550, go to motor test in engineering mode (Procedure 8).
- 3.2 Take off right shroud so you can access the gear motor.
- 3.3 Turn meter on setting to check for DC voltage.
- 3.4 Check for voltage between the yellow and the red wires. (Should be around 4.5v for 350/550)
- 3.5 Check for voltage between the yellow and orange. Check for voltage between the red and orange. These two voltages should added together should total the voltage that you had between the yellow and red.
- 3.6 Press the START button and press the UP button. Check for voltage between the black and the brown wires. You should get 4-6 volts. (As you can see, you will need someone to help you with this step.)

PROCEDURE 4: Alignment of speed sensor and magnet

- 4.1 Using a flat screw driver or a knife, take off the round disc cover on the left side of the unit.

Spirit XE500

User Manual
38 PGS 6.5 Mb 0

- C
- CT 800
- X
- XE500
- Z
- Z300

———— Magnet

———— Sensor

Repair Procedures

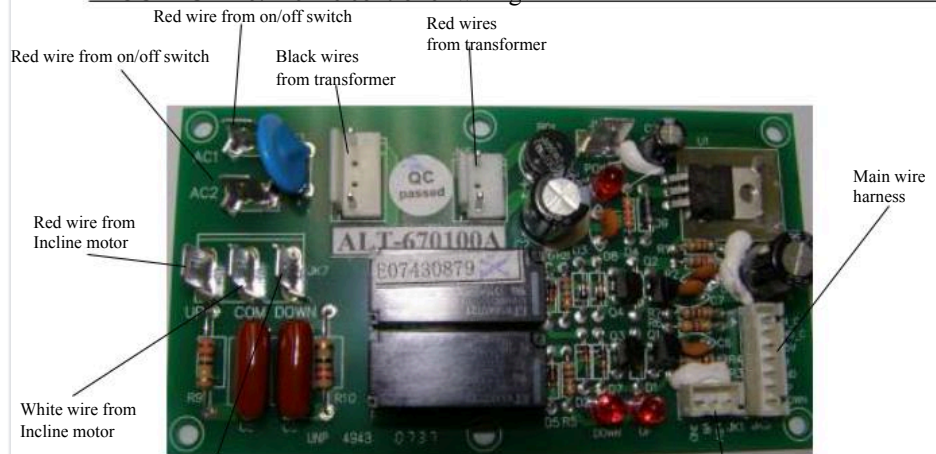
PROCEDURE 5: Adjusting brake cable

- 5.1 Take right and left shrouds off.
- 5.2 On the left side of the unit you will find the brake inside of the flywheel.
- 5.3 Using an open end wrench, loosen the small lock nut.
- 5.4 Using the same wrench, loosen the longer nut. As you loosen the nut you will see this gap get smaller.



- 5.5 The smaller the gap is, the easier the resistance will be at level 1. Dont adjust out the gap completely.
- 5.6 Tighten down the lock nut.

PROCEDURE 6: Incline controller wiring



Spirit	XE500
	User Manual 38 PGS 6.5 Mb 0
C	
CT 800	
X	
XE500	
Z	
Z300	

HIDE MENU

1. Press and hold the START, ENTER, and STOP buttons until display beeps.
2. "ENGINEERING MODE" will scroll across the screen, press ENTER.
3. Press the UP and/or DOWN buttons to scroll through the following sub menus:
 - Key Test
 - Display Test
 - Functions
 - Security
 - Factory Set
 - Exit
4. Press ENTER to access the desired program.
5. Press STOP to exit Engineering Mode.

- Key Test
Press ENTER. Press all buttons on console.
- Display Test
Press ENTER. Console will test each segment or LED. Look to see if there are any burned out or not working.

- Functions

Sleep Mode On/Off -----	Press ENTER to turn on or off.
Pause Mode On/Off -----	Press ENTER to turn on or off.
Odometer Reset -----	Press ENTER to reset.
Units English/Metric -----	Press ENTER to change.
Beep Sound On/Off -----	Press ENTER to turn on or off.
Motor Test-----	Press ENTER to begin the test.
Safety On/Off (XE300 calls it "Inc Max")---	Press ENTER to turn on or off.
Exit -----	Press ENTER to exit the functions menu.

- Security
Child Lock On/Off ----- Press ENTER to turn on or off.

- Factory Set
Press ENTER to go back to original factory settings. This will reset saved user programs.

- Exit
Press ENTER to exit Engineering Mode.

PROCEDURE 8: XE400 and XE500 Incline Calibration

If the console shows an incline error or does not seem to physically be at the incline displayed, the unit needs to be calibrated. Press and hold the START and level UP keys for 5 seconds. The message window will show "Calibration"; press ENTER. The calibration process is automatic and the system will restart when finished.

PROCEDURE 9: XE400 & XE500 Wiring Schematic

Spirit XE500

User Manual
38 PGS 6.5 Mb 0

- C
- CT 800
- X
- XE500
- Z
- Z300

HIDE MENU

CONTACTING CUSTOMER SERVICE

It is the responsibility of the Dealer to assemble and setup any Spirit product they have sold, as well as diagnose problems and perform service, regardless of the product's location. Recognizing the importance of insuring the consumer's satisfaction, Spirit technical support will always be available to assist the Dealer in diagnosing a problem. All warranties are valid from the original date of purchase by the original purchaser.

PARTS ORDERS Fax 870-930-9013

Fax your order using a completed parts purchase order to (870) 930-9013. Please do not call to place your parts orders, fax only. Service technicians are available to assist in the repair of treadmills. If taking parts orders by telephone, technical service calls will go unanswered. Standard shipping is FedEx ground. If you need an order shipped by another method, you must pay for shipping.

CUSTOMER SERVICE Call 800-258-4555

Calling from Store Location

Dial 1 to reach the first available technician, or select the extension number for a particular technician. You must have the serial number of the machine when you call.

- Charles Wood -----Customer Support ext. 626
- Terry Jordan ----- Customer Support ext. 627
- Kevin Thomas ----- -Customer Support ext. 628
- Nathan Price ----- Customer Support ext. 629
- Carla Nichols ----- -Customer Support ext. 631
- Travis Lawrence -----Customer Support ext. 633

If the technician you choose is unavailable, leave a detailed message. Leave only one message. Do not call another extension. Do not leave multiple messages. This results in a duplication of effort and keeps our technicians from assisting you and other customers in a prompt manner.

Calling from Customer Location

Dial 0 for an operator. Relay to the operator that you are a dealer and in a customer's home. You will be assisted by the first available technician.

XE ELLIPTICALWARRANTY

Spirit Manufacturing Inc. warrants all its XE elliptical parts for a period of 5

Spirit XE500

User Manual
38 PGS 6.5 Mb 0

- C
- CT 800
- X
- XE500
- Z
- Z300

HIDE MENU

responsibilities include providing new or remanufactured parts, at Spirit's option, and technical support to our independent dealers and servicing organizations. In the absence of a dealer or service organization, these warranties will be administered by Spirit directly to a consumer. An extended warranty period applies to the following components:

XE100 - XE200	XE300 - XE400 - XE500
Frame----- Lifetime	Frame ----- Lifetime
Brake----- Lifetime	Brake -----Lifetime
All Parts----- 5 years	All Parts ----- 10 years
Labor-----1 year	Labor ----- 1 years

WARRANTY POLICY

Parts Returns

It is very important that you have not only the model number but also the serial number on hand when placing a parts order. If a serial number is provided at the time a warranty parts order is placed the required parts will be sent to you at no charge. If the unit is no longer covered under warranty the parts will be billed to you on 30 day payment terms.

If a warranty replacement part is required to be returned to Spirit it will be noted on the packing list included in your shipment. Also noted on the packing list will be the amount you will be invoiced if the parts are not returned within 30 days.

Parts Required to be Returned for Credit

Upper Electronics - XE Series

Paperwork Requirement: A copy of your invoice or packing list and diagnostic form (if included with replacement part) must be returned with the defective part to receive warranty consideration.

Warranty Labor Reimbursement Procedure

Complete Request for Warranty Labor Credit Form.

Fax completed form to (870) 930-9013.

Once Spirit has received your returned parts, your request will be processed and returned by fax to you.

What is Not Covered

- 1) Failures created due to improper installation or maintenance.
- 2) Repairs requiring only simple adjustments, fuses, or calibrations.
- 3) Damages sustained from shipping - Freight claim must be filed with your carrier.
- 4) Repairs that are made beyond the warranty period.
- 5) Repairs where the customer is paying the base labor fee to the dealer.
- 6) Units that are dealer stock or floor models.
- 7) Trips for diagnostic visit.
- 8) Residential units in a commercial setting.

Spirit

XE500

User Manual
38 PGS 6.5 Mb 0

- C
- CT 800
- X
- XE500
- Z
- Z300



FACTORY USE ONLY

QUANTITY	PART NUMBER	PART DESCRIPTION	WTY	TEST RESULTS	UNIT PRICE	WORK ORDER	INVOICE

FACTORY USE ONLY

LABOR _____ FREIGHT: _____

TRIP _____

TOTAL LABOR _____

WARRANTY CREDIT WILL BE ISSUED TO DEALER ACCOUNT.

Authorization No. _____

WARRANTY ADMINISTRATOR

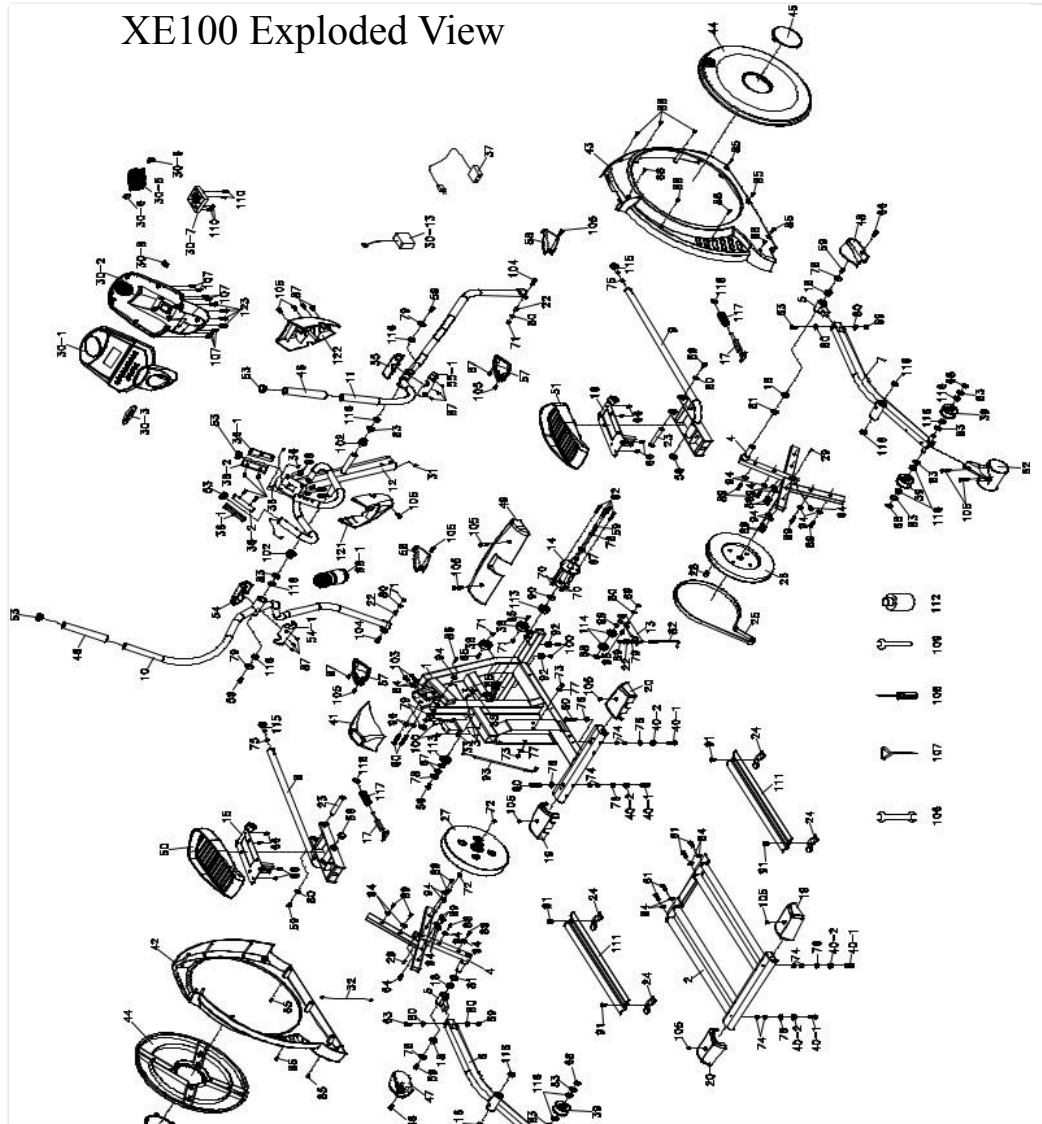
ALL PARTS MUST BE RETURNED TO FACTORY UNLESS INSTRUCTED OTHERWISE.

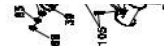
CLAIMS MUST BE RETURNED TO SPIRIT CORP. WITHIN 7 DAYS OF REPAIR.

SHADED AREAS FACTORY USE ONLY

FAX TO SPIRIT (870) 930-9013

XE100 Exploded View





Spirit	XE500
	User Manual 38 PGS 6.5 Mb 0
C	
CT 800	
X	
XE500	
Z	
Z300	

1	Main Frame	006000
2	RailAssembly	004020
4	Cross Bar	000163
5	Bushing Housing, Pedal Arm	006038
6	Pedal Arm(L) Assy	006046
7	Pedal Arm(R) Assy	006047
8	Connecting Arm (L)	006110
9	Connecting Arm (R)	006111
10	Handle Bar (L)	006101
11	Handle Bar (R)	006102
12	Console Mast	006017
13	Idler WheelAssembly	
14	Drive PulleyAxle	022148
15	Adjustable Pedal (L)	006054
16	Adjustable Pedal (R)	006055
17	Pedal Adjust Pull Pin	006002
18	~38x~31x~25x17+3T_Copper Bushing - Pedal Arm	000174
19	Rear Stabilizer Cover (A)	006121
20	Rear Stabilizer Cover (B)	006122
22	~ 11.9 x ~8.5 x 16m/m_Rod End Sleeve	000199
23	Carriage Bolt - Pedal Axle	006003
24	Retaining Bracket,Aluminum Track	004021
25	8J 500 Belt 500J/1270J	000146
26	Drive Pulley	000908
27	~292x 40 x10 Fly Wheel	000855
28	Magnet	010041
29	7x7x20L Woodruff Key	000198
30	ConsoleAssembly	006001
30~1	Top Console Cover	002130
30~2	Bottom Console Cover	006063
30~3	Badge, Console	002131
30~5	Deflector Fan Grill	000983
30~6	Fan GrillAnchor	000807
30~7	Fan Motor	000808
30~8	Fan Power Switch	000982
30~13	Receiver, HR (POLAR chest strap)	004074
31	Main Wiring Harness (1000mm)	000183
32	Power Input Jack	000185
33	Gear Motor	022170
34	300mm_Sensor W/Cable	000184
35	Sensor Rack	022989
36	850mm_Handpulse W/CableAssembly	008041
36~1	HandpulseAssembly Top	X
36~2	HandpulseAssembly Bottom	X
36~4	~3x20_Tapping Screw	000839
37	Adaptor 1.5 Amp	000137
38	~62 x ~8.2 x 36L_Transportation Wheel	001019
39	~72 Slide Wheel , Urethane	000153
40~1	3/8" x 2" _Thumb Head Socket Screw	022885
40~2	~35x10x~10 Leveling Foot - Foot Pad	022943
41	Console Mast Cover - Lower	006083
42	Chain Cover (L)	006026
43	Chain Cover (R)	006027
44	Round Disk Crank	006004
45	Round Disk Access Cover	006075
46	~32x420Lx3T_Handgrip Foam	000159
47	Pedal Arm Cover (L)	006084
48	Pedal Arm Cover (R)	006085
49	Front Stabilizer Cover	006009
50	Pedal (L)	000155
51	Pedal (R)	000837
52	Slide Wheel Cover	006010
53	~32_Button Head End Cap (1.8T)	022069

Spirit XE500

User Manual
38 PGS 6.5 Mb 0

C

CT 800

X

XE500

Z

Z300

64	Monoblock Ball Head Cap Screw - 3M	022137
65~1	Red Handle Ball Head Socket Screw	006086
66	M3 x Round Head Phillips Head Screw -Plated	010092
67	Connecting Arm Cover (L) SAME	000851
68	Connecting Arm Cover ® PART	006099
69	M8 x 11.5mm Flat Head Screw	006098
60	3/8" x 1.5" Hex Head Screw	022888
61	3/8" x 3/4" Hex Head Screw	030698
72	3/8" -UNF26 x 4T_Nut	000087
73	3/8" -UNF26 x 9T_Nut	010094
74	3/8" x 7T_Nut	010095
75	M12_Nut	010108
76	3/8" x 19 x 1.5T_Flat Washer	022794
77	3/8" x 25 x 2T_Flat Washer	000076
78	5/16" x 35 x 1.5T_Flat Washer	010098
79	5/16" x 23 x 2.0T_Flat Washer	010099
80	5/16" x 20 x 1.5T_Flat Washer	022908
81	~25_Wave Washer	022918
82	J Bolt	022698
83	~17_Wave Washer	022700
84	3/8" x 23 x 1.5T_Curved Washer	000074
85	5x16_Tapping Screw	010150
86	4x15_Self Tapping Screw	030054
87	~3.5x12m/m_Self Tapping Screw	010113
88	4x19_Self Tapping Screw	030065
89	5x16_Tapping Screw (plated)	010150
90	~35x~25.5x5T Bushing	000148
91	5/16" x 3/4" _Hex Head Screw	020340
92	~25x15_Foot Pad (25x15mm Leveler)	010124
93	310mm 90° Adjustable/with 50mm steel rope out_Steel Rope	000141
94	1/4"x19_Flat Washer	022919
95	M8 x20_Carriage Bolt	030094
96	3/8" x 2T_Spring Washer	000053
98	Drink Bottle Assembly	
98~1	Drink Bottle	030059
99	~17x~23.5x1T_Flat Washer	022975
100	5x19_Tapping Screw	030057
102	Isolator	000858
103	3/8" x 3/4" _Hex Head Screw	000060
104	5/16" x 1-1/4" _Hex Head Screw	022763
105	M5 x 15m/m_Phillips Head Screw	000913
106	13/14m/m_Wrench	022596
107	Short Phillips Head Screw Driver	023109
108	Phillips Head Screw Driver	023091
109	12m/m_Wrench	000342
110	~3.5x30m/m_Self Tapping Screw	030030
111	Aluminum Track	000152
112	Lubricant	022271
113	6005 Bearing, Crank Axle	021951
114	6203 Bearing for Idler Wheel	021987
115	M12 x P1.75 Rod End Bearing	000200

Spirit XE500

User Manual
38 PGS 6.5 Mb 0

- C
- CT 800
- X
- XE500
- Z
- Z300

118	~10_C Clip (Pull Pin)	004001
121	Upper Front Mast Cover	006058
122	Upper Rear Mast Cover	006059
	Hardware Kit	006005
	Side Decal	006067
	Footplate Replacement Kit	006153
	Locking Pin Bracket Only (footplate replacement kit)	006238
	5 x 10 Phillips Head Screw - Plated (footplate replacement kit)	000051

XE200 Exploded View



XE200 Part List

Part #	Description	Spirit Part #
1	Main Frame	004022
2	RailAssembly	004020
4	Cross Bar	000163

Spirit XE500

User Manual
38 PGS 6.5 Mb 0

C

CT 800

X

XE500

Z

Z300

70	Pedal Arm (R) Assy	006047
11	Handle Bar (R)	006053
12	Console Mast	006149
13	Idler Wheel Assembly	
14	Drive Pulley Axle	022148
15	Adjustable Pedal (L)	006054
16	Adjustable Pedal (R)	006055
17	Locking Pin Assembly-Pedal Adjust Pull Pin	006002
18	~ 38x~ 31x~ 25x17+3T_Copper Bushing (50% Copper)-Pedal Arm	000174
19	Rear Stabilizer Cover (A)	006121
20	Rear Stabilizer Cover (B)	006122
22	~ 11.9 x ~ 8.5 x 16m/m_Rod End Sleeve	000199
23	Carriage Bolt - Pedal Axle	006003
24	Retaining Bracket, Aluminum Track	004021
25	8J 500 Belt (500J/1270J)	000146
26	Drive Pulley	000908
27	~ 327x 37 x 8, 6 magnets, Fly Wheel	006048
28	Magnet	010041
29	7x7x20L Woodruff Key	000198
30	Console Assembly	006024
30~1	Top Console Cover	002130
30~2	Bottom Console Cover	006063
30~3	Badge, Console	002131
30~5	Deflector Fan Grill	000983
30~6	Fan Grill Anchor	000807
30~7	Fan Assembly Motor	000808
30~8	Fan Power Switch	000982
30~13	Receiver, HR	022675
31	Main Wiring Harness (1000mm)	000183
32	Power Input Jack	000185
33	Gear Motor	022170
34	300mm_Sensor W/Cable	000184
35	Sensor Rack	022989
36	850mm_Handpulse W/Cable Assembly	008041
36~1	Handpulse Assembly Top	X
36~2	Handpulse Assembly Bottom	X
36~4	~ 3x20_Tapping Screw	000839
37	1.5 Amp Adapter	000137
38	~ 62 x ~ 8.2 x 36L_Transportation Wheel	001019

HIDE MENU

Part #	Description	Spirit Part #
39	~72_Slide Wheel , Urethane	000153
40~1	3/8" x 2" _Thumb Head Socket Screw	022885
40~2	~ 35x10 x~ 10 Leveling Foot 35x10 Cushion Foot Pad	022943
41	Console Mast Cover-Lower	006083
42	Chain Cover (L)	006026
43	Chain Cover (R)	006027
44	Round Disk Crank	006004
45	Round Disk Access Cover	006075
46~1	38x420L_Handgrip Foam (L) After #1121 - #006163	006022
46~2	38x420L_Handgrip Foam ® After #1121 - #006164	006023
47	Pedal Arm Cover (L)	006084
48	Pedal Arm Cover (R)	006085
49	Front Stabilizer Cover	006009
50	Pedal (L)	000155
51	Pedal (R)	000837
52	Slide Wheel Cover	006010
53	~ 32 (1.8T)_Button Head End Cap	022069
54	Front Handle Bar Cover (L)	SET 006006

Spirit	XE500
	User Manual 38 PGS 6.5 Mb 0
C	
CT 800	
X	
XE500	
Z	
Z300	

65	5/16" x 25 - Button Head Socket Screw		010072
66~1	Rear Handle Bar Cover (R)	SET	000051
67	M5x10 - Phillips Head Screw -Plated		004949
68	Pedal End Cover		006949
69	25_C_Clip		006949
70	Connecting Arm Cover A	SET	022288
71	17_C_Clip		006949
72~1	Connecting Arm Cover A	SET	022288
73	M8 x 71 - Nylon Nut		006950
74	Connecting Arm Cover B	SET	006950
75~1	Connecting Arm Cover B	SET	006950
76	5/16" x 71 - Nylon Nut		006950
77	5/16" x 15m/m(4T) - Hex Head Screw		022881
78	5/16" x 15m/m(4T) - Nut		022881
79	3/8" x 2-1/4" - Hex Head Screw		022881
80	3/8" x 2-1/4" - Nut		022881
81	3/8" x 3-3/4" - Hex Head Screw		022881
82	3/8" x 3-3/4" - Nut		022881
83	1/2" x 3/4" - Hex Head Screw		022881
84	M12 - Nut		022881
85	M8 x 50 - Socket Head Cap Screw - 22mm		022881
86	3/8" x 1.5T - Flat Washer		022881
87	3/8" x 25 x 2T - Flat Washer		022881
88	5/16" x 35 x 1.5T - Flat Washer		022881
89	5/16" x 23 x 1.5T - Flat Washer		022881
90	5/16" x 20 x 1.5T - Flat Washer		022881
91	~ 25 - Wave Washer		022881
92	J Bolt		022881

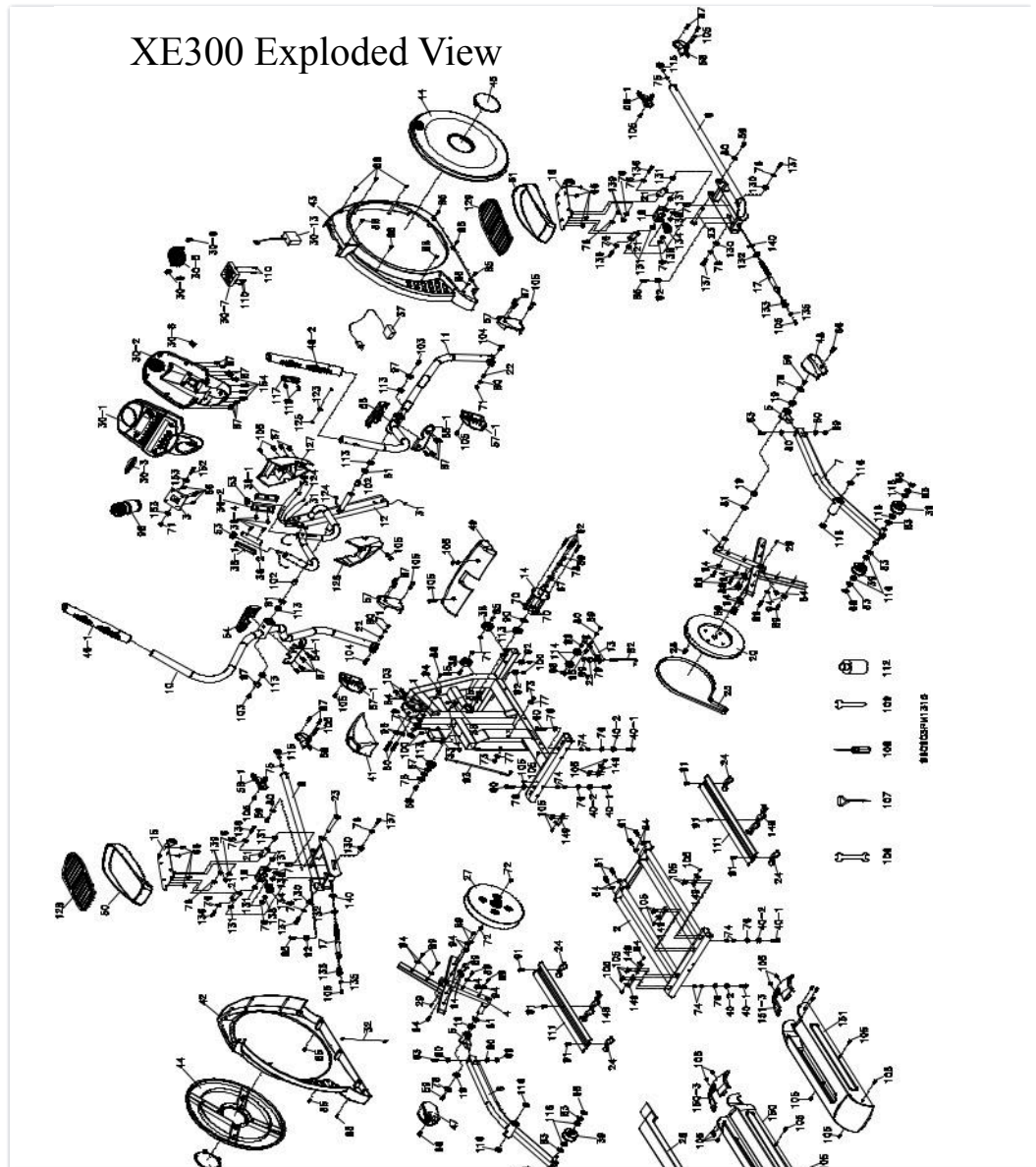
HIDE MENU

Part #	Description	Spirit Part #
83	~ 17 - Wave Washer	022700
84	3/8" x 23 x 1.5T - Curved Washer	000074
85	5x16 - Tapping Screw	010113
86	4x15 - Self Tapping Screw	030054
87	~ 3.5x12m/m - Self Tapping Screw	010113
88	4x19 - Self Tapping Screw	030065
89	5x16 - Tapping Screw - plated	010150
90	~ 35x~ 25.5x5T Bushing	000148
91	5/16" x 3/4" - Hex Head Screw	020340
92	~ 25x15 - Foot Pad	022919
93	310mm 90° Adjustable/with 50mm steel rope out - Steel Rope	000141
94	1/4"x19 - Flat Washer	022919
95	M8 x20 - Carriage Bolt	030094
96	3/8" x 2T - Spring Washer	000053
97	3/8" x 30 x 2T - Flat Washer	006045
98~1	Drink Bottle	030059
99	~ 17x~ 23.5x1T - Flat Washer	022975
100	5x19 - Tapping Screw	030057
102	Isolator	000291
103	3/8" x 3/4" - Hex Head Screw	000060
104	5/16" x 1-1/4" - Hex Head Screw	022763
105	M5 x 15m/m - Phillips Head Screw	000913
106	13/14m/m - Wrench	022596
107	Short Phillips Head Screw Driver	023109
108	Phillips Head Screw Driver	023091
109	12m/m - Wrench	000342
110	~ 3 - 5x30m/m - Self Tapping Screw	020020

Spirit	XE500
User Manual 38 PGS 6.5 Mb 0	
C	
CT 800	
X	
XE500	
Z	
Z300	

112	Lubricant	022277
113	Locking Pin Bracket -(footplate replacement kit)	006238
114	6005 Bearing, Pulley Axle	021951
115	M12 x P1.75_Rod End Bearing	000200
116	6003 Bearing for Slide Wheel	010043
117	Handle Switch Assembly (w/switch & overlay)	006025
119	M5×20_Flat Head Socket Screw	006105
121	~ 13.5×38.51 Locking Pin Spring	006145
122	~ 10×2_C Clip	004001
123	Console Mast Grommet	006081
124	450mm_Switch Cable (Upper)	006089
125	900mm_Switch Cable (Lower)	006015
126	Front Console Cover	006058
127	Rear Console Cover	006059
	Hardware Kit	006013
	Handle Switch (Overlay ONLY)	006011
	Handle Switch (Switch ONLY)	006012
	Handle Switch on Plastic Housing	006070

XE300 Exploded View



Spirit	XE500
	User Manual 38 PGS 6.5 Mb 0
C	
CT 800	
X	
XE500	
Z	
Z300	

HIDE MENU

No.	Description	Spirit Part #	23
1	Main Frame	004022	
2	RailAssembly		
3	Console Holder Plate	006080	
4	Cross Bar	000163	
5	Bushing Housing, PedalArm	006038	
6	Pedal Arm(L) Assy	006108	
7	Pedal Arm(R) Assy	006109	
8	Connecting Arm (L)	006020	
9	Connecting Arm (R)	006021	
10	Handle Bar (L)	006052	
11	Handle Bar (R)	006053	
12	Console Mast	006150	
13	Idler Wheel Bracket	000994	
14	Drive PulleyAxle	022148	
15	Adjustable Pedal (L)	006056	
16	Adjustable Pedal ®	006057	
17	Locking PinAssembly-Crank Pin	006036	
18	PedalAdjustment Plate	006077	
19	Copper Bushing (50% Copper)Pedal Arm	000174	
20	~330_Drive Pulley	000908	
21	Adjusting Plate	006079	
22	~ 11.9 x ~8.5 x 16m/m_Rod End Sleeve	000199	
23	Carriage Bolt - Pedal Axle	006003	
24	Retaining Bracket,Aluminum Track	004021	
25	8J 500 Belt (500J/1270J)	000146	
26	Rail SupportAssembly	006029	
27	~327x 37 x 8, 6 magnets, Fly Wheel	006048	
28	Magnet	010041	
29	7x7x20L_Woodruff Key	000198	
30	ConsoleAssembly	006060	
30~1	Top Console Cover	006136	
30~2	Bottom Console Cover	006063	
30~3	Badge, Console	002131	
30~5	Deflector Fan Grill	000983	
30~6	Fan GrillAnchor	000807	
30~7	Fan Motor	000808	
30~8	Fan Power Switch	000982	
30~13	Receiver, HR	022675	
31	Main Wiring Harness (1000mm)	000183	
32	Power Input Jack	000185	
33	Gear Motor	022170	
34	300mm Sensor W/Cable	000184	
35	Sensor Rack	022989	
36	850mm_HandpulseAssembly	008041	
36~1	HandpulseAssembly Top	X	
36~2	HandpulseAssembly Bottom	X	
36~4	~3x20_Tapping Screw	000839	24

No.	Description	Spirit Part #
37	9V,DV,2.0A_Adaptor - 2.0 Amp	000138
38	~62 x ~8.2 x 36L_Transportation Wheel	001019
39	~72_Slide Wheel , Urethane	000153
40~1	3/8" x 2" _Flat Head Socket Screw	022885
40~2	~35x10x~10Leveling Foot n- Cushion Foot Pad	022943
41	Console Mast Cover-Lower	006083
42	Chain Cover (L)	006026
43	Chain Cover (R)	006027
44	Round Disk Crank	006004
45	Round Disk Access Cover	006075
46~1	38x420L_Handgrip Foam (L) - Starting w/#1361 use #006163 (38x380)	006022
46~2	38x420L_Handgrip Foam ® - Starting w/#1361 use #006164 (38x380)	006023
47	Pedal Arm Cover (L)	006084
48	Pedal Arm Cover (R)	006085

Spirit	XE500
	User Manual 38 PGS 6.5 Mb 0
C	
CT 800	
X	
XE500	
Z	
Z300	

No.	Description	How it Works	Spirit Part #
58~1	Counting Arm Cover D	SET	000030
59	Ball (R)5m/m_Hex Head Screw		000863
60	3/8" (1.81)4B_Hex Head Screw Cap		020609
64	Front Handle Bar Head Screw	SET	006006
62~1	Rear Handle Bar Head Screw	SET	030097
63	Front Handle Bar Head Cap Screw -22mm	SET	000009
64~1	Rear Handle Bar Head Cap Screw - 3M	SET	010087
65	Counting Button Head Socket Screw	SET	006042
66~1	Counting Wheel Head Screw - Plated	SET	000051
67	~25_C Clip		000195
68	~17_C Clip		000196
69	M8 x 7T_Nyloc Nut		022288
70	1/4" _Nyloc Nut		030098
71	5/16" x 7T_Nyloc Nut		000081
72	3/8" -UNF26 x 4T_Nut		010094
73	3/8" -UNF26 x 9T_Nut		010095
74	3/8" x 7T_Nut		010108
75	M12_Nut		022794
76	3/8" x 19 x 1.5T_Flat Washer		000076
77	3/8" x 25 x 2T_Flat Washer		010098
78	5/16" x 35 x 1.5T_Flat Washer		010099
79	5/16" x 23 x 1.5T_Flat Washer		022908
80	5/16" x 20 x 1.5T_Flat Washer		022918
81	~25_Wave Washer		022698

No.	Description	Spirit Part #
82	J Bolt	
83	~17_Wave Washer	022700
84	3/8" x 23 x 1.5T_Curved Washer	000074
85	5x16_Tapping Screw - plated	010150
86	4x15_Self Tapping Screw	030054
87	~3.5x12m/m_Self Tapping Screw	010113
88	4x19_Self Tapping Screw	030065
89	5x16_Tapping Screw - plated	010150
90	~35x~25.5x5T_Bushing	000148
91	5/16" x 3/4" _Hex Head Screw	020340
92	~25x15_Foot Pad - Leveler	010124
93	310mm 90° Adjustable/with 50mm steel rope out_Steel Rope	000141
94	1/4"x19_Flat Washer	022919
95	M8 x20_Carriage Bolt	030094
96	3/8" x 2T_Spring Washer	000053
97	3/8"×30×2T_Flat Washer	006045
98	Drink Bottle Assembly	
99	~17x~23.5x1T_Flat Washer	022975
100	5x19_Tapping Screw	030057
102	~26×~35×~45×10T(T919)_Isolator	000291
103	3/8" x 3/4" _Hex Head Screw	000060
104	5/16" x 1-1/4" _Hex Head Screw	022763
105	M5 x 15m/m_Phillips Head Screw	000913
106	13/14m/m_Wrench	022596
107	Small Phillips Head Screw Driver	022100

Spirit	XE500
	User Manual 38 PGS 6.5 Mb 0
C	
CT 800	
X	
XE500	
Z	
Z300	

109	12mm_Wrench	000872
110	~14x10x9T_Bushing - Pedal Bushing	004031
110	~3.5x30m/m_Self Tapping Screw	030030
111	~19x14x10x(5+4)T_Bushing	004033
111	Aluminum Track	000180
112	~16.1x31x31_Nylon Washer	022216
112	Lubricant	022216
113	Pedal Adjustment Handlebar Knob	006107
113	6005_Bearing PulleyAxle	021951
114	Threaded Bushing	006037
114	6203_Bearing for Idler Wheel	021987
115	~5x15_Flat Washer	006148
115	M12x11.75_Rod End Bearing	006200
116	6003_Bearing for Slide Wheel	010043
117	Handle Switch Assembly - See Below for individual part #'s	006025
119	M5x20_Flat Head Socket Screw	006105
123	Console Mast Grommet	006081
124	450mm_Switch Cable (Upper)	006089
125	900mm_Switch Cable (Lower)	006015
126	Front Console Cover	006058
127	Rear Console Cover	006059

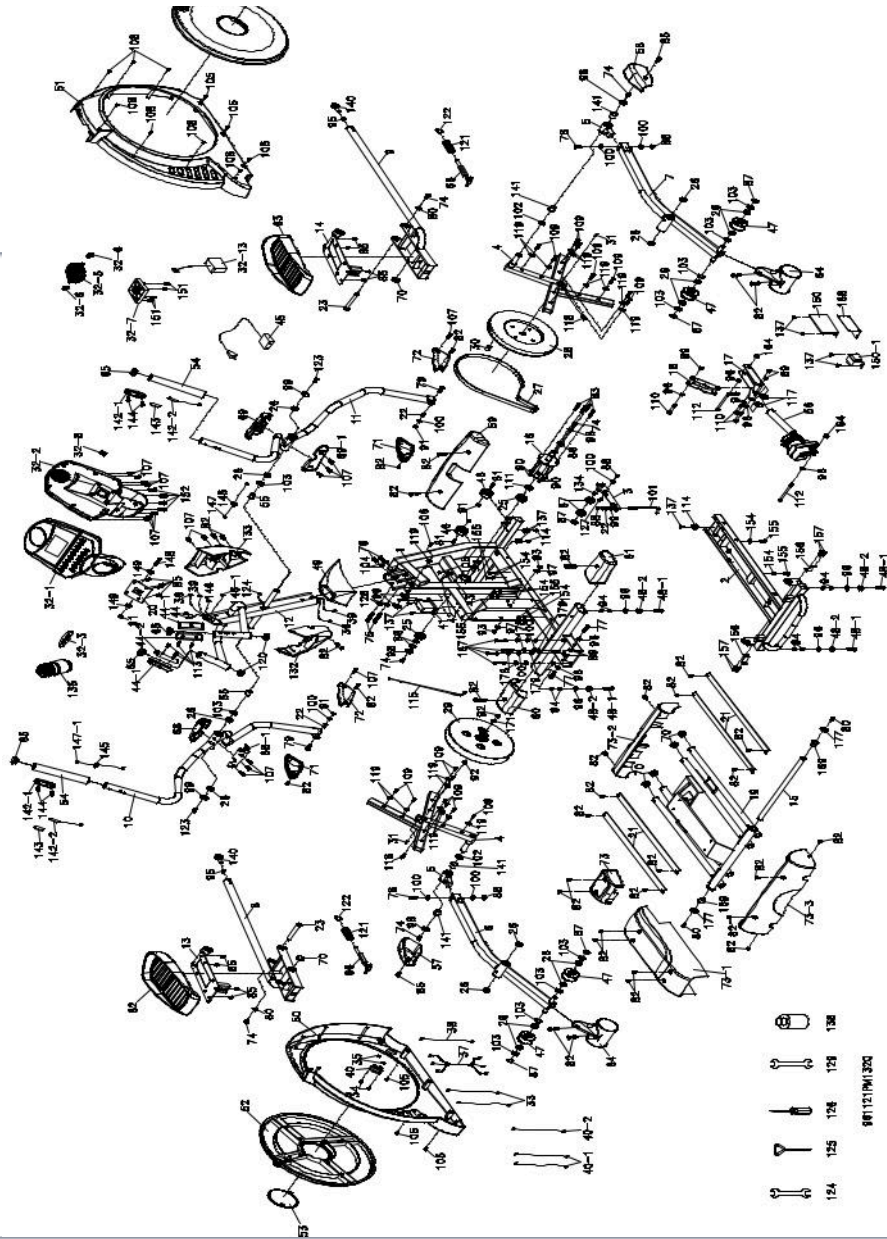
HIDE MENU

No.	Description	Spirit Part #
136	3/8"x19_Hex Head Screw	004062
137	M10x40mm_Hex Head Screw	004063
138	M10x8T_Nyloc Nut	006147
139	3/8"x7T_Nyloc Nut	000080
140	~16_C Clip - Pull Pin	004034
148	Shroud Retaining Bracket	000297
149	Rear Cover L Plate	006031
150	Rear Cover Assembly (L)	006032
150~3	Front Cover, Top (L)	006033
151	Rear Cover Assembly (R)	006034
151~3	Front Cover, Top (R)	006035
152	5/16"x2-1/2"_Hex Head Screw	0030048
153	~5/16"x~25x3T_Nylon Washer	006165
154	~3.5x10m/m_Self Tapping Screw	023129
	Overlay Only (Handle Switch)	006011
	Switch Only (Handle Switch)	006012
	Plastic Housing (Handle Switch)	006070
	Hardware Kit	006044
	Pedal Elevation Gauge Decal	006118
	"Up/Down" Sticker For Pedal	006106

Spirit XE500

User Manual
38 PGS 6.5 Mb 0

- C
- CT 800
- X
- XE500
- Z
- Z300



HIDE MENU

XE400 Part List

No.	Description	Part #
1	Main Frame	006158
2	Inclinable RailAssembly	006123
3	Idler WheelAssembly	
4	Cross Bar	000163
5	Bushing Housing, Pedal Arm	006038
6	Pedal Arm(L) - Assy	006137
7	Pedal Arm (R) - Assy	006138
8	Connecting Arm (L)	006110
9	Connecting Arm (R)	006111
10	Handle Bar (L)	006127
11	Handle Bar (R)	006128
12	Console Mast	006151
13	Adjustable Pedal (L)	006054
14	Adjustable Pedal (R)	006055
15	Rail Assembly Tube	006119
16	Drive PulleyAxle	022148
17	Incline Device	
18	Incline Motor Wolder	
19	RailAssembly	006120

Spirit	XE500
	User Manual 38 PGS 6.5 Mb 0
C	
CT 800	
X	
XE500	
Z	
Z300	

22	11.9 x 8.5 x 16m/m_Rod End Sleeve	000199
22~3	Badge, Console	002131
23	Carriage Bolt - Pedal Axle	006903
23~5	Deflector Fan Grill	000983
25	6005_Bearing, PulleyAxle	021951
25~6	Fan Grill Anenior	000807
26	6003_Bearing, Slide Wheel	010043
26~7	Fan Motor	000808
27	81500_Belt (500I/1270J)	000146
27~8	Fan Power Switch	000982
28	330_Drive Pulley	000908
28~13	Receiver, HR (POLAR Chest Strap)	004074
29	327 x 37 x 8_Fly Wheel, with 6 magnets	006048
33	187x250x300mm_Connecting Wire, Red, Controller	006090
30	Magnet	010041
34	M4x12mm_Phillips Head Screw	000076
31	7x7x20L_Woodruff Key	000198
32	M4x5T_Nyloc Nut	030031
36	Console Assembly	006088
37	800mm_Connecting Wire, Incline Motor Power Cord	006091
38	850mm_Connecting Wire, Incline Motor	006092
39	1000mm Computer Cable	000183

HIDE MENU

No.	Description	Part #
40	On/Off Switch	
40~1	Connecting Wires	000303
40~2	Ground Wire	006093
41	M-100A_Gear Motor	022170
42	300mm_Sensor W/Cable	000184
43	Sensor Rack	022989
44	Handpulse W/850mm_Cable Assembly w/top and bottom covers	008041
44~1	HandpulseAssembly Top	X
44~2	HandpulseAssembly Bottom	X
45	Power Cord	022812
46	~ 62_Transportation Wheel (62 X 8.2 X 36L)	001019
47	~ 72 PU_Sliding Wheel , Urethane	000153
48~1	3/8" x 2"_Flat Head Socket Screw	022885
48~2	~ 35x10_Leveling Foot - Cushion Foot Pad	022942
49	Console Mast Cover-Lower	006083
50	Chain Cover (L)	006028
51	Chain Cover (R)	006027
52	Round Disk Cover, Crank	006004
53	Round Disk Access Cover	006075
54	32 x 3T x 420L_Handgrip Foam	006156
55	Isolator	000858
56	Incline Motor	006143
57	Pedal Arm Cover (L)	006084
58	Pedal Arm Cover (R)	006085
59	Front Stabilizer Cover	006009
60	Middle Stabilizer Cover (L)	006071
61	Middle Stabilizer Cover ®	006072
62	Pedal (L)	000155
63	Pedal (R)	000837
64	Slide Wheel Cover	006010
65	~ 32 (1.8T)_Button Head End Cap	022069
66	Locking PinAssembly	006002
67	Bearing for Idler Wheel	021987
68	Front Handle Bar Cover (L)	006154
68~1	Rear Handle Bar Cover (L)	X
69	Front Handle Bar Cover (R)	006155
69~1	Rear Handle Bar Cover (R)	X

Spirit	XE500
	User Manual 38 PGS 6.5 Mb 0
C	
CT 800	
X	
XE500	
Z	
Z300	

72	Connecting Arm Cover Screw	000699
80	Front Bottom Hex Head Screw	006073
81~1	Front Cover Button Head Socket Screw	000664
82~2	Rear Bar Cover Phillips Head Screw	000897
83~3	1/4" x 3/4" Hex Head Screw	000078
84	5/16" x 105m/m Phillips Head Screw - Plated	000583
85	3/8" x 2 1/4" Hex Head Screw	000823
86	3/8" x 3/4" Hex Head Screw	000060
87	M8 x 7T Nylon Nut	022888
89	3/8" x 7T Nylon Nut	000080
90	1/4" Nylon Nut	030098
91	5/16" x 7T Nylon Nut	000081
92	3/8" -UNF26 x 4T Nut	010094
93	3/8" -UNF26 x 9T Nut	010095
94	3/8" x 7T Nut	010108
95	M12 Nut	022794
96	3/8" x 19 x 1.5T Flat Washer	000076
97	3/8" x 25 x 2T Flat Washer	010098
98	5/16" x 35 x 1.5T Flat Washer	010099
99	5/16" x 23 x 1.5T Flat Washer	022908
100	5/16" x 20 x 1.5T Flat Washer	022918
101	J Bolt	
102	~ 25 Wave Washer	022698
103	~ 17 Wave Washer	022700
104	3/8" x 23 x 2T Curved Washer	030081
105	5x16 Tapping Screw - plated	010150
106	4x15 Self Tapping Screw	030054
107	~ 3 . 5x12 Self Tapping Screw	010113
108	4x19 Self Tapping Screw	030065
109	5x16 Tapping Screw - plated	010150
110	3/8" x 2-1/2" Hex Head Screw	
111	Bushing	
112	M10x130m/m Hex Head Screw	
113	~ 3x20 Tapping Screw	000839
114	~ 25x15L Foot Pad	010124
115	Steel Rope	000141
117	~ 3/8" x 35 x 5T Nylon Washer	
118	M8x30 Socket Head Cap Screw (3M)	010087
119	1/4"x19 Flat Washer	022919
120	~ 32 (1.8T) Round Head End Cap	000841
121	~ 13.5x 38.51L Locking Pin Spring	006145
122	~ 10 C Ring	004001
123	5/16" x 15m/m Hex Head Screw	022803
124	13/14mm Wrench	022596
125	Short Phillips Head Screw Driver	023109
126	Phillips Head Screw Driver	023091
127	M8 x20 Carriage Bolt	030094

No.	Description	Part
128	3/8" x 2T Spring Washer	000053
129	12mm Wrench	000342
132	Front Mast Cover	006058
133	Rear Mast Cover	006059
134	~ 17x 23.5 x 1T Flat Washer	022975
135	Drink Bottle	030059
137	5x19 Tapping Screw	030057
138	Lubricant	022271
140	M12 x P1.75 Rod End Bearing	000200
141	Copper Bushing (50% Copper) - Pedal Arm	000174
142	Handle Switch Assembly	006025
142~1	Handle Switch Plastic Housing only	006070
142~2	Switch Only	006012
143	UP/DOWN Label - Overlay only	006011

Spirit	XE500
	User Manual 38 PGS 6.5 Mb 0
C	
CT 800	
X	
XE500	
Z	
Z300	

136	450mm_Handle_Wire_(Upper)_Resistance	006089
136	2.6x6mm_Self_Tapping_Screw	006167
136-1	450mm_Handle_Wire_(Upper)_Incline_(RED_END)	006088
137	1000mm_Handle_Wire_(Lower)_Resistance_(SAME)	006088
137-1	1000mm_Handle_Wire_(Lower)_Incline_WIRE)	006088
138	3.5x16-Tapping_Screw	02998
148	5/16" x 2-1/2" Hex Head Screw	030048
158	Cover_Holder	
159	5/16" x 25 x 3T Nylon Washer	006165
159	Mox10m/m_Phillips_Head_Screw	
164	M10x8T_Nyloc_Nut	006147
167	5/16" x 2-1/4" Hex Head Screw	020623
168	Controller Back Plate	X
169	~ 38 x~ 34 x~ 26 x 4+16T_Bushing	006069
171	3/8"x15x1T_Flat_Washer	006160
177	5/16"x35x2.0T_Flat_Washer	
	Hardware Kit	006104
	Footplate Replacement Kit	006153
	Locking Pin Bracket Only - (footplate replacement kit)	006238
	5x10 Phillips Head Screw - (Locking pin bracket)	000051

XE500 Exploded View

Spirit XE500

User Manual
38 PGS 6.5 Mb 0

- C
- CT 800
- X
- XE500
- Z
- Z300

HIDE MENU

XE500 Part List

No.	Description	Part #
1	Main Frame	006159
2	Inclinable RailAssembly	006124
3	Idler WheelAssembly	000149
4	Cross Bar	000163
5	Bushing Housing, Pedal Arm	006038
6	PedalArm(L)	006116
7	Pedal Arm(R)	006117
8	Connecting Arm (L)	006112
9	Connecting Arm (R)	006113
10	Handle Bar (L)	006129
11	Handle Bar (R)	006130
12	Console Mast	006152
13	RailAssembly	006120
14	Incline Device	
15	Incline Motor Holder	
16	Crank Axle - Drive Pulley Axle	022148
17	Adjustable PedalAssembly	006166
18	Locking PinAssembly-Crank Pin	006036
19	PedalAdjustmentAssembly	
20	Console HolderAssembly	
21	Incline Rail_2.5T x 625L NEW	006100
22	~ 11.9 x ~ 8.5 x 16m/m_Fish-eye Sleeve	000199
23	~ 19 x 110L x 5/16" _Carriage Bolt	000287
24	Rail Assembly Tube	006119
25	6005_Bearing, Crank Axle	021951
26	6003_Bearing, Slide Wheel	010043
27	8J 500_Belt - 500J/1270J	000146
28	~ 330_Drive Pulley	000908
29	~ 327 x 37 x 8_Fly Wheel, 6 magnets	006048
30	Magnet	010041
31	7x7x20L_Woodruff Key	000198
32	ConsoleAssembly	006065
32~1	Top Console Cover	006142
32~2	Bottom Console Cover	006063
32~3	Badge, Console	002131
32~5	Deflector Fan Grill	000983
32~6	Fan Grill Anchor	000807
32~7	Fan Motor	000808
32~8	Fan Power Switch	000982
32~9	Face Plate Lens Cover	006157
32~13	Receiver, HR	004074
33	187x250x300mm_Connecting Wire,RED, Controller	006090
34	M4x12mm_Phillips Head Screw	000070
35	M4x5T_Nyloc Nut	030031
36	1450mm_Incline Computer Cable,BLACK	006068
37	800mm_Connecting Wire, Incline Motor Power Cord,RED,WHITE,BLACK	006091

No.	Description	Part #
38	850mm_Connecting Wire, Incline Motor	006092
39	1000mm_Computer Cable	000183
40	On/Off Switch	
40-1	Connecting Wire	000202

Spirit XE500

User Manual
38 PGS 6.5 Mb 0

C

CT 800

X

XE500

Z

Z300

Part #	Description	Part #
44	850mm_Handpulse W/CableAssembly	008041
44~1	HandpulseAssembly Top	X
44~2	HandpulseAssembly Bottom	X
45	Power Cord	022812
46	~ 62_Transportation Wheel	001019
47	~ 72 PU_Sliding Wheel , Urethane	000153
48~1	3/8" x 2" _Flat Head Socket Screw	022885
48~2	35x10 Leveling Foot - Cushion Foot Pad	022942
49	Console Mast Cover - Lower	006083
50	Chain Cover (L)	006028
51	Chain Cover (R)	006027
52	Round Disk Cover, Crank	006004
53	Round Disk Access Cover	000700
54	38 x 420L_Handgrip Foam	006023
55	~ 45 x ~ 35 x ~ 26x 10T Isolator	000291
56	Incline Motor	006144
57	Pedal Arm Cover (L)	006086
58	Pedal Arm Cover (R)	006087
59	Front Stabilizer Cover	006009
60	Middle Stabilizer Cover (L)	006071
61	Middle Stabilizer Cover (R)	006072
62	Pedal (L)	000156
63	Pedal (R)	000157
64	Slide Wheel Cover	006010
65	~ 32 (1.8T)_Button Head End Cap	022069
66	Pedal Foam (L)	006042
67	Pedal Foam (R)	006043
68	Front Handle Bar Cover (L) SET	006006
68~1	Rear Handle Bar Cover (L) SET	X
69	Front Handle Bar Cover ® SET	006007
69~1	Rear Handle Bar Cover ® SET	X
70	~ 32 (2.5T)_Round Head End Cap	000841
70~1	~ 32 (1.8T)_Round Head End Cap	022069
71	Connecting Arm Cover A	006049
71~1	Connecting Arm Cover A	X
72	Connecting Arm Cover B	006050
72~1	Connecting Arm Cover B	X
73	Incline Bottom Cover	006135
73~1	Incline Cover	006074
73~2	Rear Bar Cover	006097

HIDE MENU

No.	Description	Part #
73~3	Inclineable Rail Cover	006098
74	5/16" x 15m/m_Hex Head Screw	022803
75	3/8" x 2-1/4" _Hex Head Screw	020623
76	3/8" x 3/4" _Hex Head Screw	000060
77	3/8" x 1-1/2" _Hex Head Screw	000062
78	M8 x 50_Socket Head Cap Screw	022139
79	5/16" x 1-1/4" _Hex Head Screw	022763
80	5/16" x 19m/m_Hex Head Screw	
81	5/16" x1- 3/4" _Button Head Socket Screw	000086
82	M5 x 15m/m_Phillips Head Screw	000913
83	1/4" x 3/4" _Hex Head Screw	030097
85	M5x10_Phillips Head Screw - Plated	000051
86	~ 25 _C Ring	000195
87	~ 17 _C Ring	000196
88	M8 x 7T_Nyloc Nut	022288
89	3/8" x 7T_Nyloc Nut	010108
90	1/4" _Nyloc Nut	030098
91	5/16" x 7T_Nyloc Nut	000081
92	3/8" -UNF26 x 4T_Nut	010094
93	3/8" -UNF26 x 9T_Nut	010095

Spirit	XE500
	User Manual 38 PGS 6.5 Mb 0
C	
CT 800	
X	
XE500	
Z	
Z300	

967	3/8" x 19 x 1.5T_Flat Washer	000076
97	3/8" x 25 x 2T_Flat Washer	010019
108	4x19_Self Tapping Screw	030088
98	5/16" x 35 x 1.5T_Flat Washer	010099
109	5x16_Tapping Screw	010150
99	3/4" x 23 x 1.5T_Flat Washer	022908
110	3/8" x 2-1/2" Hex Head Screw	
100	5/16"x20x1.5T_Flat Washer	022918
101	Bushing	
102	M10x130m/m Hex Head Screw	
103	~ 25_Wave Washer	006839
113	~ 3x20_Tapping Screw	006839
103	~ 17_Wave Washer	022724
114	25x15L_Foot Pad	000941
104	3/8" x 23 x 2T_Curved Washer	000941
115	Steel Rope	
116	~ 25x25L_Foot Pad	006161
117	~ 3/8" x ~ 35 x5T_Nylon Washer	
118	M8x30_Socket Head Cap Screw	010087
119	1/4"x19_Flat Washer	022919
120	Front Console Cover	006058
120~1	Rear Console Cover	006059

HIDE MENU

No.	Description	Part #
121	Handle Switch Assembly	006025
121~1	Handle Switch Plastic Housing only	006070
121~2	Handle Switch	006012
122	UP/DOWN_Label - Overlay	006011
123	M5x20_Flat Head Socket Screw	006105
124	13/14mm_Wrench	022596
125	Short Phillips Head Screw Driver	023109
126	Phillips Head Screw Driver	023091
127	M8 x20_Carriage Bolt	030094
128	3/8" x 2T_Split Washer	000053
129	12/14mm_Wrench	000342
131	3/8" x 30 x 2.0T_Flat Washer	006045
133	Pedal Adjustment Handlebar Knob	006107
134	~ 17x 23.5 x 1T_Flat Washer	022975
135	Bearing for Idler Wheel	021987
136	M12 x P1.75_Rod End Bearing	000200
137	5x19_Tapping Screw	030057
138	Lubricant	022271
139	~ 31 x ~ 25.5 x ~ 19 x 16+3T_Bushing	022699
141	Copper Bushing (50% Copper)	000174
145	Console Mast Wire Grommet	006081
146	450mm Handle Wire (Upper), Resistance	006089
146~1	450mm Handle Wire (Upper), Incline (RED END)	006167
147	1000mm Handle Wire (Lower), Resistance (SAME	006088
147~1	1000mm Handle Wire (Lower), Incline WIRE)	006088
148	5/16" x 2-1/2" Hex Head Screw	030048
149	~ 5/16" x ~ 25 x 3T_Nylon Washer	006165
150	Incline Controller (Lower Board) ALT#670100A	006095
150~1	Incline Adaptor (Transformer)	006096
151	~ 3 . 5x30 m/m_Self Tapping Screw	030030
152	~ 2.6x 6 m/m_Self Tapping Screw	023217
154	Wire Tie Mount	010083
155	~ 3 . 5x16_Tapping Screw	022979
156	Cover Holder	
157	M6x10m/m_Phillips Head Screw	
158	~ 10 x ~ 14 x ~ 12 x 5+4T_Bushing	004033

Spirit XE500

User Manual
38 PGS 6.5 Mb 0

C

CT 800

X

XE500

Z

Z300

160	Direct Drive Bushing-crank	006059
161	Pedal End Cover_Nylon Washer	004040
162	3/8"x15x15 Flat Washer	006068
163	Adjusting Plate_Hex Head Screw	004063
164	M16x8x2 Nylon Washer	006147
165	Pedal Ring Motion Gauge Decal	006034
167	Hardware K4 Hex Head Screw	006133
168	Control Back Plate Pedal	006106
169	~ 38 x ~ 34 x ~ 26 x 4+16T_Bushing	006069
171	3/8"x15x1T_Flat Washer	006160